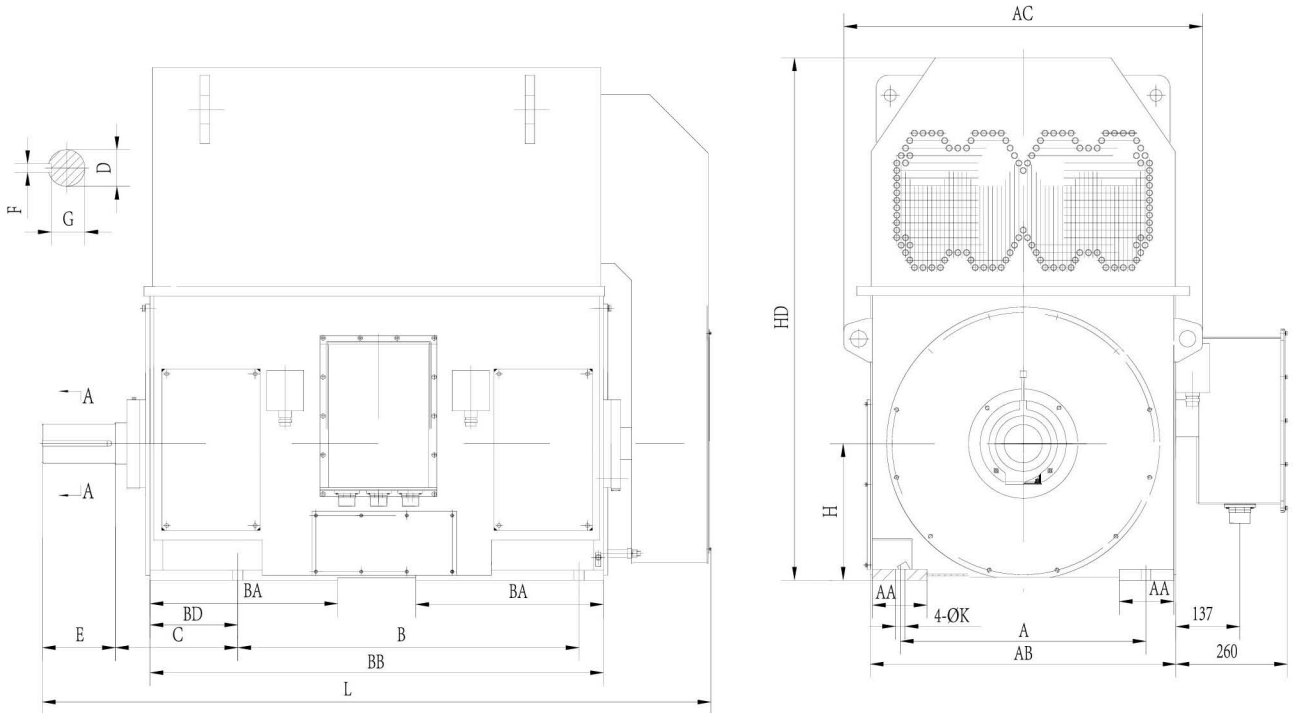


YKK系列高压三相异步电动机安装尺寸 (6KV)



YKK系列6kV高压三相异步电动机外形尺寸图

| 机座 | 极数 | 安装尺寸及公差 | | | | | | | | | | | | | | 外形尺寸 | | | | | | | | | | | | |
|-----|------|---------|-------|------|-------|------|------|------|------------------|-------|-------|------|--------|------|--------|------|------|------|------------|------|------|------|------|------|------|------|------|------|
| | | A | | B | | C | | D | | E | | F | | G | | H | | K | | AA | AC | AB | BA | BB | BD | HD | L | |
| | | 基本尺寸 | 极限偏差 | 基本尺寸 | 极限偏差 | 基本尺寸 | 极限偏差 | 基本尺寸 | 极限偏差 | 基本尺寸 | 极限偏差 | 基本尺寸 | 极限偏差 | 基本尺寸 | 极限偏差 | 基本尺寸 | 极限偏差 | 基本尺寸 | 极限偏差 | | | | | | | | | |
| 355 | 2 | 630 | ±1.4 | 900 | ±1.4 | 315 | ±4 | 80 | +0.03 +0.011 | 170 | ±0.5 | 22 | 0 | 71 | 0 | 355 | 0 | 28 | +0.52 0 | 150 | 1024 | 800 | 560 | 1420 | 200 | 1480 | 2100 | |
| | 4-6 | | | | | | | 100 | 210 | ±0.57 | 28 | 90 | | 2170 | | | | | | | | | | | | | | |
| 400 | 2 | 710 | ±1.75 | 1000 | ±1.75 | 400 | ±4 | 90 | +0.035 +0.013 | 170 | ±0.5 | 25 | -0.052 | 81 | 0 | 400 | 0 | 35 | 0 | 1124 | 900 | 610 | 1520 | 230 | 1550 | 2270 | | |
| | 4-10 | | | | | | | 110 | | | | | | 28 | | | | | | | | | | | | | 100 | |
| 450 | 2 | 800 | ±1.75 | 1120 | ±1.75 | 400 | ±4 | 100 | +0.04 +0.015 | 210 | ±0.57 | 28 | 0 | 90 | -0.062 | 450 | 0 | 35 | +0.62 0 | 1204 | 980 | 680 | 1640 | 1730 | 2380 | 2425 | | |
| | 4 | | | | | | | 120 | | | | | | 32 | | | | | | | | | | | | | 109 | 2420 |
| | 6-12 | | | | | | | 130 | | | | | | 250 | | | | | | | | | | | | | 119 | 2420 |
| 500 | 2 | 900 | ±2.1 | 1250 | ±2.1 | 560 | ±4 | 110 | +0.04 +0.015 | 210 | ±0.57 | 28 | 0 | 100 | -0.052 | 500 | 0 | 42 | +0.62 0 | 1344 | 1120 | 720 | 1750 | 300 | 1880 | 2625 | | |
| | 4 | | | | | | | 130 | 32 | | | | | 119 | | | | | | | | | | | | | 2580 | |
| | 6-12 | | | | | | | 140 | 36 | | | | | 128 | | | | | | | | | | | | | 2580 | |
| 560 | 2 | 1000 | ±2.1 | 1400 | ±2.1 | 560 | ±4 | 130 | +0.04 +0.015 | 250 | ±0.65 | 40 | 0 | 119 | -0.062 | 560 | 0 | 48 | +0.62 0 | 1440 | 1220 | 1880 | 340 | 2000 | 2730 | 2790 | | |
| | 4 | | | | | | | 150 | | | | | | 36 | | | | | | | | | | | | | 138 | 2730 |
| | 6-12 | | | | | | | 160 | | | | | | 40 | | | | | | | | | | | | | 147 | 2780 |
| 630 | 2 | 1120 | ±2.8 | 1600 | ±2.8 | 530 | ±4 | 140 | +0.046 +0.017 | 250 | ±0.57 | 36 | -0.062 | 128 | 0 | 630 | 0 | 56 | +0.62 0 | 1580 | 1360 | 780 | 2020 | 300 | 2220 | 2960 | | |
| | 4 | | | | | | | 170 | | | | | | 40 | | | | | | | | | | | | | 157 | 2960 |
| | 6-12 | | | | | | | 180 | | | | | | 45 | | | | | | | | | | | | | 165 | 2980 |
| 710 | 2 | 1400 | ±2.8 | 1800 | ±2.8 | 530 | ±4 | 160 | +0.046 +0.017 | 300 | ±0.65 | 45 | 0 | 147 | -0.3 | 710 | 0 | 56 | +0.62 0 | 1820 | 1600 | 850 | 2170 | 185 | 2900 | 3500 | | |
| | 4-16 | | | | | | | 200 | | | | | | 350 | | | | | | | | | | | | | ±0.7 | 45 |

注: YKK560-2、YKK630-2、YKK710-2电机轴承为滑动轴承。

YKK355-710系列高压6kV数据

| 型号 | 功率 kW | 额定转速 r/min | 额定电流 A | 效率% | 功率因数 cos φ | 最大转矩/ 额定转矩 | 堵转转矩/ 额定转矩 | 堵转电流/ 额定电流 |
|----------|----------|---------------|-----------|------|---------------|---------------|---------------|---------------|
| YKK355-2 | 220 | 2975 | 27.2 | 91.7 | 0.85 | 1.8 | 0.6 | 7.0 |
| YKK355-2 | 250 | 2975 | 30.8 | 91.8 | 0.85 | 1.8 | 0.6 | 7.0 |
| YKK355-2 | 280 | 2975 | 34.5 | 92.0 | 0.85 | 1.8 | 0.6 | 7.0 |
| YKK355-2 | 315 | 2975 | 38.6 | 92.4 | 0.85 | 1.8 | 0.6 | 7.0 |
| YKK355-4 | 185 | 1485 | 22.8 | 91.9 | 0.85 | 1.8 | 0.7 | 6.5 |
| YKK355-4 | 200 | 1485 | 24.6 | 92.1 | 0.85 | 1.8 | 0.7 | 6.5 |
| YKK355-4 | 220 | 1485 | 27.0 | 92.2 | 0.85 | 1.8 | 0.7 | 6.5 |
| YKK355-4 | 250 | 1485 | 30.7 | 92.3 | 0.85 | 1.8 | 0.7 | 6.5 |
| YKK355-4 | 280 | 1485 | 33.9 | 92.4 | 0.86 | 1.8 | 0.7 | 6.5 |
| YKK355-4 | 315 | 1485 | 38.1 | 92.6 | 0.86 | 1.8 | 0.7 | 6.5 |
| YKK355-6 | 185 | 990 | 23.7 | 91.5 | 0.82 | 1.8 | 0.7 | 6.0 |
| YKK355-6 | 200 | 990 | 25.6 | 91.8 | 0.82 | 1.8 | 0.7 | 6.0 |
| YKK355-6 | 220 | 990 | 28.1 | 92.0 | 0.82 | 1.8 | 0.7 | 6.0 |
| YKK355-6 | 250 | 990 | 31.8 | 92.2 | 0.82 | 1.8 | 0.7 | 6.0 |
| YKK400-2 | 355 | 2975 | 42.9 | 92.7 | 0.86 | 1.8 | 0.6 | 7.0 |
| YKK400-2 | 400 | 2975 | 48.1 | 93.0 | 0.86 | 1.8 | 0.6 | 7.0 |
| YKK400-2 | 450 | 2975 | 54.0 | 93.3 | 0.86 | 1.8 | 0.6 | 7.0 |
| YKK400-2 | 500 | 2975 | 59.8 | 93.6 | 0.86 | 1.8 | 0.6 | 7.0 |
| YKK400-2 | 560 | 2975 | 66.8 | 93.8 | 0.86 | 1.8 | 0.6 | 7.0 |
| YKK400-4 | 355 | 1485 | 42.8 | 92.8 | 0.86 | 1.8 | 0.7 | 6.5 |
| YKK400-4 | 400 | 1485 | 48.1 | 93.0 | 0.86 | 1.8 | 0.7 | 6.5 |
| YKK400-4 | 450 | 1485 | 54.0 | 93.2 | 0.86 | 1.8 | 0.7 | 6.5 |
| YKK400-4 | 500 | 1485 | 59.9 | 93.4 | 0.86 | 1.8 | 0.7 | 6.5 |
| YKK400-4 | 560 | 1485 | 66.9 | 93.6 | 0.86 | 1.8 | 0.7 | 6.5 |
| YKK400-6 | 280 | 990 | 35.5 | 92.5 | 0.82 | 1.8 | 0.7 | 6.0 |
| YKK400-6 | 315 | 990 | 39.8 | 92.8 | 0.82 | 1.8 | 0.7 | 6.0 |
| YKK400-6 | 355 | 990 | 44.3 | 93.0 | 0.83 | 1.8 | 0.7 | 6.0 |
| YKK400-6 | 400 | 990 | 49.8 | 93.1 | 0.83 | 1.8 | 0.7 | 6.0 |
| YKK400-8 | 185 | 740 | 24.9 | 91.6 | 0.78 | 1.8 | 0.8 | 5.5 |
| YKK400-8 | 200 | 740 | 26.8 | 91.9 | 0.78 | 1.8 | 0.8 | 5.5 |

YKK355-710系列高压6kV数据

| 型号 | 功率 kW | 额定转速 r/min | 额定电流 A | 效率% | 功率因数 $\cos \phi$ | 最大转矩/ 额定转矩 | 堵转转矩/ 额定转矩 | 堵转电流/ 额定电流 |
|-----------|----------|---------------|-----------|------|---------------------|---------------|---------------|---------------|
| YKK400-8 | 220 | 740 | 29.5 | 92.1 | 0.78 | 1.8 | 0.8 | 5.5 |
| YKK400-8 | 250 | 740 | 33.0 | 92.2 | 0.79 | 1.8 | 0.8 | 5.5 |
| YKK400-8 | 280 | 740 | 36.9 | 92.4 | 0.79 | 1.8 | 0.8 | 5.5 |
| YKK400-10 | 185 | 595 | 26.1 | 90.8 | 0.75 | 1.8 | 0.8 | 5.5 |
| YKK400-10 | 200 | 595 | 28.2 | 91.1 | 0.75 | 1.8 | 0.8 | 5.5 |
| YKK450-2 | 630 | 2975 | 74.1 | 94.0 | 0.87 | 1.8 | 0.6 | 7.0 |
| YKK450-2 | 710 | 2975 | 83.5 | 94.1 | 0.87 | 1.8 | 0.6 | 7.0 |
| YKK450-2 | 800 | 2975 | 93.8 | 94.3 | 0.87 | 1.8 | 0.6 | 7.0 |
| YKK450-2 | 900 | 2975 | 105.3 | 94.5 | 0.87 | 1.8 | 0.6 | 7.0 |
| YKK450-4 | 630 | 1485 | 75.2 | 93.8 | 0.86 | 1.8 | 0.7 | 6.5 |
| YKK450-4 | 710 | 1485 | 84.5 | 94.0 | 0.86 | 1.8 | 0.7 | 6.5 |
| YKK450-4 | 800 | 1485 | 93.8 | 94.3 | 0.87 | 1.8 | 0.7 | 6.5 |
| YKK450-4 | 900 | 1485 | 105.5 | 94.4 | 0.87 | 1.8 | 0.7 | 6.5 |
| YKK450-6 | 450 | 990 | 55.9 | 93.4 | 0.83 | 1.8 | 0.7 | 6.0 |
| YKK450-6 | 500 | 990 | 61.9 | 93.7 | 0.83 | 1.8 | 0.7 | 6.0 |
| YKK450-6 | 560 | 990 | 68.4 | 93.8 | 0.84 | 1.8 | 0.7 | 6.0 |
| YKK450-6 | 630 | 990 | 76.9 | 93.9 | 0.84 | 1.8 | 0.7 | 6.0 |
| YKK450-8 | 315 | 740 | 41.4 | 92.7 | 0.79 | 1.8 | 0.8 | 5.5 |
| YKK450-8 | 355 | 740 | 46.6 | 92.8 | 0.79 | 1.8 | 0.8 | 5.5 |
| YKK450-8 | 400 | 740 | 51.7 | 93.0 | 0.80 | 1.8 | 0.8 | 5.5 |
| YKK450-8 | 450 | 740 | 58.1 | 93.1 | 0.80 | 1.8 | 0.8 | 5.5 |
| YKK450-10 | 220 | 595 | 30.9 | 91.3 | 0.75 | 1.8 | 0.8 | 5.5 |
| YKK450-10 | 250 | 595 | 35.1 | 91.5 | 0.75 | 1.8 | 0.8 | 5.5 |
| YKK450-10 | 280 | 595 | 39.2 | 91.7 | 0.75 | 1.8 | 0.8 | 5.5 |
| YKK450-10 | 315 | 595 | 43.3 | 92.1 | 0.76 | 1.8 | 0.8 | 5.5 |
| YKK450-10 | 355 | 595 | 48.7 | 92.3 | 0.76 | 1.8 | 0.8 | 5.5 |
| YKK450-12 | 185 | 495 | 28.0 | 90.9 | 0.70 | 1.8 | 0.8 | 5.5 |
| YKK450-12 | 200 | 495 | 30.1 | 91.2 | 0.70 | 1.8 | 0.8 | 5.5 |
| YKK450-12 | 220 | 495 | 32.2 | 91.4 | 0.72 | 1.8 | 0.8 | 5.5 |
| YKK450-12 | 250 | 495 | 36.4 | 91.7 | 0.72 | 1.8 | 0.8 | 5.5 |

YKK355-710系列高压6kV数据

| 型号 | 功率 kW | 额定转速 r/min | 额定电流 A | 效率% | 功率因数 cos φ | 最大转矩/ 额定转矩 | 堵转转矩/ 额定转矩 | 堵转电流/ 额定电流 |
|-----------|----------|---------------|-----------|------|---------------|---------------|---------------|---------------|
| YKK500-2 | 1000 | 2975 | 116.9 | 94.6 | 0.87 | 1.8 | 0.6 | 7.0 |
| YKK500-2 | 1120 | 2975 | 130.8 | 94.7 | 0.87 | 1.8 | 0.6 | 7.0 |
| YKK500-2 | 1250 | 2975 | 145.7 | 94.9 | 0.87 | 1.8 | 0.6 | 7.0 |
| YKK500-2 | 1400 | 2975 | 161.1 | 95.0 | 0.88 | 1.8 | 0.6 | 7.0 |
| YKK500-4 | 1000 | 1485 | 117.0 | 94.5 | 0.87 | 1.8 | 0.7 | 6.5 |
| YKK500-4 | 1120 | 1485 | 131.0 | 94.6 | 0.87 | 1.8 | 0.7 | 6.5 |
| YKK500-4 | 1250 | 1485 | 144.2 | 94.8 | 0.88 | 1.8 | 0.7 | 6.5 |
| YKK500-4 | 1400 | 1485 | 161.3 | 94.9 | 0.88 | 1.8 | 0.7 | 6.5 |
| YKK500-6 | 710 | 990 | 86.3 | 94.2 | 0.84 | 1.8 | 0.7 | 6.0 |
| YKK500-6 | 800 | 990 | 97.1 | 94.4 | 0.84 | 1.8 | 0.7 | 6.0 |
| YKK500-6 | 900 | 990 | 107.8 | 94.5 | 0.85 | 1.8 | 0.7 | 6.0 |
| YKK500-6 | 1000 | 990 | 119.7 | 94.6 | 0.85 | 1.8 | 0.7 | 6.0 |
| YKK500-8 | 500 | 740 | 64.3 | 93.6 | 0.80 | 1.8 | 0.8 | 5.5 |
| YKK500-8 | 560 | 740 | 71.8 | 93.8 | 0.80 | 1.8 | 0.8 | 5.5 |
| YKK500-8 | 630 | 740 | 78.7 | 93.9 | 0.82 | 1.8 | 0.8 | 5.5 |
| YKK500-8 | 710 | 740 | 88.6 | 94.0 | 0.82 | 1.8 | 0.8 | 5.5 |
| YKK500-10 | 400 | 595 | 54.7 | 92.6 | 0.76 | 1.8 | 0.8 | 5.5 |
| YKK500-10 | 450 | 595 | 61.5 | 92.7 | 0.76 | 1.8 | 0.8 | 5.5 |
| YKK500-10 | 500 | 595 | 66.3 | 93.0 | 0.78 | 1.8 | 0.8 | 5.5 |
| YKK500-10 | 560 | 595 | 74.2 | 93.1 | 0.78 | 1.8 | 0.8 | 5.5 |
| YKK500-10 | 630 | 595 | 83.4 | 93.2 | 0.78 | 1.8 | 0.8 | 5.5 |
| YKK500-12 | 280 | 495 | 40.7 | 91.9 | 0.72 | 1.8 | 0.8 | 5.5 |
| YKK500-12 | 315 | 495 | 45.7 | 92.1 | 0.72 | 1.8 | 0.8 | 5.5 |
| YKK500-12 | 355 | 495 | 50.0 | 92.3 | 0.74 | 1.8 | 0.8 | 5.5 |
| YKK500-12 | 400 | 495 | 56.2 | 92.6 | 0.74 | 1.8 | 0.8 | 5.5 |
| YKK500-12 | 450 | 495 | 63.1 | 92.7 | 0.74 | 1.8 | 0.8 | 5.5 |
| YKK560-2 | 1600 | 2975 | 184.0 | 95.1 | 0.88 | 1.8 | 0.6 | 7.0 |
| YKK560-2 | 1800 | 2975 | 206.8 | 95.2 | 0.88 | 1.8 | 0.6 | 7.0 |
| YKK560-2 | 2000 | 2975 | 229.2 | 95.4 | 0.88 | 1.8 | 0.6 | 7.0 |
| YKK560-4 | 1600 | 1485 | 184.2 | 95.0 | 0.88 | 1.8 | 0.6 | 6.5 |

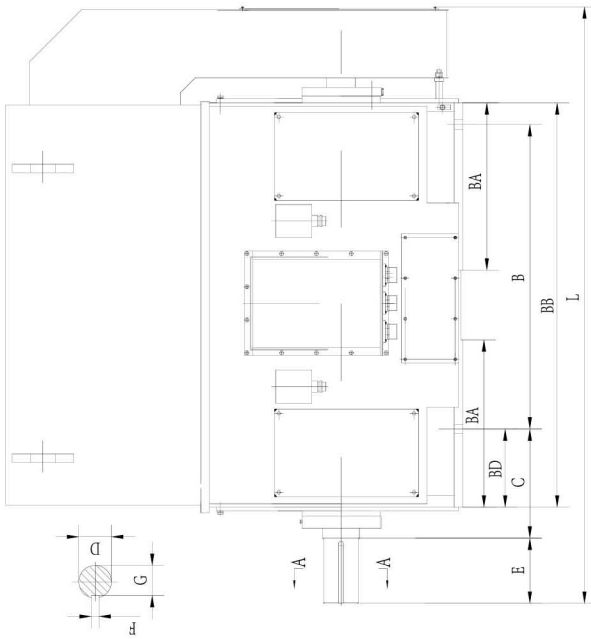
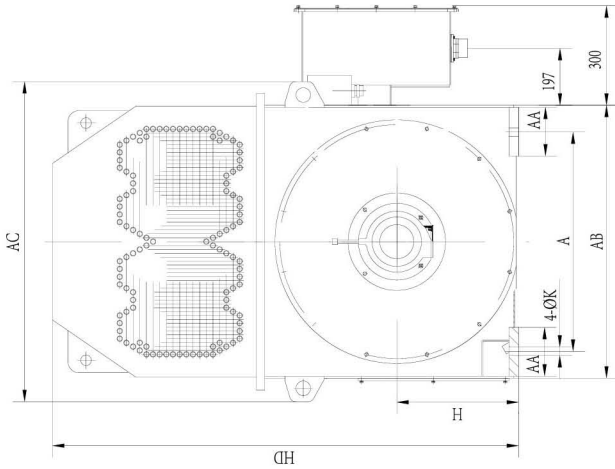
YKK355-710系列高压6kV数据

| 型号 | 功率 kW | 额定转速 r/min | 额定电流 A | 效率% | 功率因数 $\cos \phi$ | 最大转矩/ 额定转矩 | 堵转转矩/ 额定转矩 | 堵转电流/ 额定电流 |
|-----------|----------|---------------|-----------|------|---------------------|---------------|---------------|---------------|
| YKK560-4 | 1800 | 1485 | 207.0 | 95.1 | 0.88 | 1.8 | 0.6 | 6.5 |
| YKK560-4 | 2000 | 1485 | 229.5 | 95.3 | 0.88 | 1.8 | 0.6 | 6.5 |
| YKK560-6 | 1120 | 990 | 133.9 | 94.7 | 0.85 | 1.8 | 0.7 | 6.5 |
| YKK560-6 | 1250 | 990 | 147.4 | 94.9 | 0.86 | 1.8 | 0.7 | 6.5 |
| YKK560-6 | 1400 | 990 | 164.9 | 95.0 | 0.86 | 1.8 | 0.7 | 6.5 |
| YKK560-8 | 800 | 740 | 99.7 | 94.2 | 0.82 | 1.8 | 0.7 | 6.0 |
| YKK560-8 | 900 | 740 | 109.3 | 94.3 | 0.84 | 1.8 | 0.7 | 6.0 |
| YKK560-8 | 1000 | 740 | 121.4 | 94.4 | 0.84 | 1.8 | 0.7 | 6.0 |
| YKK560-10 | 710 | 595 | 93.8 | 93.4 | 0.78 | 1.8 | 0.7 | 6.0 |
| YKK560-10 | 800 | 595 | 102.7 | 93.7 | 0.80 | 1.8 | 0.7 | 6.0 |
| YKK560-10 | 900 | 595 | 115.4 | 93.8 | 0.80 | 1.8 | 0.7 | 6.0 |
| YKK560-12 | 500 | 495 | 69.8 | 93.1 | 0.74 | 1.8 | 0.7 | 6.0 |
| YKK560-12 | 560 | 495 | 76.1 | 93.2 | 0.76 | 1.8 | 0.7 | 6.0 |
| YKK560-12 | 630 | 495 | 85.5 | 93.3 | 0.76 | 1.8 | 0.7 | 6.0 |
| YKK630-2 | 2240 | 2975 | 256.5 | 95.5 | 0.88 | 1.8 | 0.6 | 7.0 |
| YKK630-2 | 2500 | 2975 | 286.0 | 95.6 | 0.88 | 1.8 | 0.6 | 7.0 |
| YKK630-2 | 2800 | 2975 | 320.3 | 95.6 | 0.88 | 1.8 | 0.6 | 7.0 |
| YKK630-2 | 3150 | 2975 | 359.9 | 95.7 | 0.88 | 1.8 | 0.6 | 7.0 |
| YKK630-4 | 2240 | 1485 | 256.8 | 95.4 | 0.88 | 1.8 | 0.6 | 6.5 |
| YKK630-4 | 2500 | 1485 | 286.3 | 95.5 | 0.88 | 1.8 | 0.6 | 6.5 |
| YKK630-4 | 2800 | 1485 | 320.3 | 95.6 | 0.88 | 1.8 | 0.6 | 6.5 |
| YKK630-4 | 3150 | 1485 | 359.6 | 95.8 | 0.88 | 1.8 | 0.6 | 6.5 |
| YKK630-6 | 1600 | 990 | 188.3 | 95.1 | 0.86 | 1.8 | 0.7 | 6.5 |
| YKK630-6 | 1800 | 990 | 211.6 | 95.2 | 0.86 | 1.8 | 0.7 | 6.5 |
| YKK630-6 | 2000 | 990 | 234.6 | 95.4 | 0.86 | 1.8 | 0.7 | 6.5 |
| YKK630-6 | 2240 | 990 | 262.5 | 95.5 | 0.86 | 1.8 | 0.7 | 6.5 |
| YKK630-8 | 1120 | 740 | 135.8 | 94.5 | 0.84 | 1.8 | 0.7 | 6.0 |
| YKK630-8 | 1250 | 740 | 151.2 | 94.7 | 0.84 | 1.8 | 0.7 | 6.0 |
| YKK630-8 | 1400 | 740 | 169.2 | 94.8 | 0.84 | 1.8 | 0.7 | 6.0 |
| YKK630-8 | 1600 | 740 | 193.1 | 94.9 | 0.84 | 1.8 | 0.7 | 6.0 |

YKK355-710系列高压6kV数据

| 型号 | 功率 kW | 额定转速 r/min | 额定电流 A | 效率% | 功率因数 cos φ | 最大转矩/ 额定转矩 | 堵转转矩/ 额定转矩 | 堵转电流/ 额定电流 |
|-----------|----------|---------------|-----------|------|---------------|---------------|---------------|---------------|
| YKK630-8 | 1800 | 740 | 217.1 | 95.0 | 0.84 | 1.8 | 0.7 | 6.0 |
| YKK630-10 | 1000 | 595 | 128.1 | 93.9 | 0.80 | 1.8 | 0.7 | 6.0 |
| YKK630-10 | 1120 | 595 | 143.2 | 94.1 | 0.80 | 1.8 | 0.7 | 6.0 |
| YKK630-10 | 1250 | 595 | 159.3 | 94.4 | 0.80 | 1.8 | 0.7 | 6.0 |
| YKK630-10 | 1400 | 595 | 178.2 | 94.5 | 0.80 | 1.8 | 0.7 | 6.0 |
| YKK630-10 | 1600 | 595 | 203.4 | 94.6 | 0.80 | 1.8 | 0.7 | 6.0 |
| YKK630-12 | 710 | 495 | 96.2 | 93.4 | 0.76 | 1.8 | 0.7 | 6.0 |
| YKK630-12 | 800 | 495 | 108.1 | 93.7 | 0.76 | 1.8 | 0.7 | 6.0 |
| YKK630-12 | 900 | 495 | 121.5 | 93.8 | 0.76 | 1.8 | 0.7 | 6.0 |
| YKK630-12 | 1000 | 495 | 134.8 | 93.9 | 0.76 | 1.8 | 0.7 | 6.0 |
| YKK630-12 | 1120 | 495 | 150.9 | 94.0 | 0.76 | 1.8 | 0.7 | 6.0 |
| YKK710-2 | 3550 | 2975 | 405.6 | 95.7 | 0.88 | 1.8 | 0.5 | 6.5 |
| YKK710-2 | 4000 | 2975 | 456.6 | 95.8 | 0.88 | 1.8 | 0.5 | 6.5 |
| YKK710-2 | 4500 | 2975 | 513.6 | 95.8 | 0.88 | 1.8 | 0.5 | 6.5 |
| YKK710-4 | 3550 | 1485 | 405.2 | 95.8 | 0.88 | 1.8 | 0.5 | 6.5 |
| YKK710-4 | 4000 | 1485 | 456.1 | 95.9 | 0.88 | 1.8 | 0.5 | 6.5 |
| YKK710-4 | 4500 | 1485 | 513.1 | 95.9 | 0.88 | 1.8 | 0.5 | 6.5 |
| YKK710-6 | 2500 | 990 | 292.9 | 95.5 | 0.86 | 1.8 | 0.6 | 6.5 |
| YKK710-6 | 2800 | 990 | 327.7 | 95.6 | 0.86 | 1.8 | 0.6 | 6.5 |
| YKK710-6 | 3150 | 990 | 368.7 | 95.6 | 0.86 | 1.8 | 0.6 | 6.5 |
| YKK710-8 | 2000 | 740 | 240.9 | 95.1 | 0.84 | 1.8 | 0.6 | 6.5 |
| YKK710-8 | 2240 | 740 | 269.8 | 95.1 | 0.84 | 1.8 | 0.6 | 6.5 |
| YKK710-10 | 1800 | 595 | 228.6 | 94.7 | 0.80 | 1.8 | 0.6 | 6.0 |
| YKK710-10 | 2000 | 595 | 254.0 | 94.7 | 0.80 | 1.8 | 0.6 | 6.0 |
| YKK710-12 | 1250 | 495 | 168.2 | 94.1 | 0.76 | 1.8 | 0.6 | 6.0 |
| YKK710-12 | 1400 | 495 | 188.2 | 94.2 | 0.76 | 1.8 | 0.6 | 6.0 |
| YKK710-12 | 1600 | 495 | 214.8 | 94.3 | 0.76 | 1.8 | 0.6 | 6.0 |
| YKK710-16 | 710 | 370 | 99.0 | 93.3 | 0.74 | 1.8 | 0.6 | 6.0 |
| YKK710-16 | 800 | 370 | 111.4 | 93.4 | 0.74 | 1.8 | 0.6 | 6.0 |
| YKK710-16 | 900 | 370 | 125.2 | 93.5 | 0.74 | 1.8 | 0.6 | 6.0 |
| YKK710-16 | 1000 | 370 | 138.9 | 93.6 | 0.74 | 1.8 | 0.6 | 6.0 |

YKK系列高压三相异步电动机安装尺寸 (10KV)



YKK系列高压三相异步电动机外形图及安装尺寸 (10000V)

安装尺寸及公差

| 机座 | 极数 | 外形尺寸 | | | | | | | | | |
|-----|------|--------------------|--------------------|---------------------|---------------------|--------------------|------------------|-------------|----------------|-----------------|--------------|
| | | A | B | C | D | E | F | G | H | K | L |
| 400 | 2 | 基本尺寸 710 | 基本尺寸 1000 | 基本尺寸 375 | 基本尺寸 90 | 基本尺寸 170 | 基本尺寸 25 | 基本尺寸 81 | 基本尺寸 400 | 基本尺寸 35 | 基本尺寸 2270 |
| | 4-6 | 极限偏差 ± 1.75 | 极限偏差 ± 1.75 | 极限偏差 ± 0.035 | 极限偏差 ± 0.5 | 极限偏差 ± 0.57 | 极限偏差 0 | 极限偏差 100 | 极限偏差 0 | 极限偏差 0 | 极限偏差 1550 |
| 450 | 2 | 基本尺寸 800 | 基本尺寸 1120 | 基本尺寸 400 | 基本尺寸 90 | 基本尺寸 170 | 基本尺寸 25 | 基本尺寸 81 | 基本尺寸 450 | 基本尺寸 35 | 基本尺寸 2385 |
| | 4-12 | 极限偏差 ± 1.75 | 极限偏差 ± 1.75 | 极限偏差 ± 0.013 | 极限偏差 ± 0.5 | 极限偏差 ± 0.5 | 极限偏差 -0.052 | 极限偏差 100 | 极限偏差 0 | 极限偏差 0 | 极限偏差 1730 |
| 500 | 2 | 基本尺寸 900 | 基本尺寸 1250 | 基本尺寸 560 | 基本尺寸 100 | 基本尺寸 210 | 基本尺寸 28 | 基本尺寸 90 | 基本尺寸 500 | 基本尺寸 42 | 基本尺寸 2625 |
| | 4-12 | 极限偏差 ± 2.1 | 极限偏差 ± 2.1 | 极限偏差 ± 0.04 | 极限偏差 ± 0.57 | 极限偏差 ± 0.57 | 极限偏差 -0.2 | 极限偏差 119 | 极限偏差 0 | 极限偏差 $+0.62$ | 极限偏差 1880 |
| 560 | 2 | 基本尺寸 1000 | 基本尺寸 1400 | 基本尺寸 560 | 基本尺寸 130 | 基本尺寸 250 | 基本尺寸 32 | 基本尺寸 138 | 基本尺寸 560 | 基本尺寸 42 | 基本尺寸 2790 |
| | 4-12 | 极限偏差 ± 2.1 | 极限偏差 ± 2.1 | 极限偏差 ± 4 | 极限偏差 ± 0.015 | 极限偏差 ± 0.65 | 极限偏差 -0.062 | 极限偏差 147 | 极限偏差 -1.0 | 极限偏差 0 | 极限偏差 2000 |
| 630 | 2 | 基本尺寸 1120 | 基本尺寸 1600 | 基本尺寸 560 | 基本尺寸 140 | 基本尺寸 250 | 基本尺寸 36 | 基本尺寸 128 | 基本尺寸 630 | 基本尺寸 48 | 基本尺寸 2730 |
| | 4-12 | 极限偏差 ± 2.8 | 极限偏差 ± 2.8 | 极限偏差 ± 0.015 | 极限偏差 ± 0.57 | 极限偏差 ± 0.57 | 极限偏差 -0.3 | 极限偏差 157 | 极限偏差 0 | 极限偏差 $+0.62$ | 极限偏差 2000 |
| 710 | 2 | 基本尺寸 1400 | 基本尺寸 1800 | 基本尺寸 530 | 基本尺寸 170 | 基本尺寸 300 | 基本尺寸 40 | 基本尺寸 165 | 基本尺寸 710 | 基本尺寸 56 | 基本尺寸 2960 |
| | 4-16 | 极限偏差 ± 2.8 | 极限偏差 ± 2.8 | 极限偏差 ± 0.017 | 极限偏差 ± 0.65 | 极限偏差 ± 0.65 | 极限偏差 -0.3 | 极限偏差 147 | 极限偏差 -1.5 | 极限偏差 0 | 极限偏差 2980 |

注: YKK560-2、YKK630-2、YKK710-2电机轴承为滑动轴承。

YKK400-710系列高压10kV数据

| 型号 | 功率 kW | 额定转速 r/min | 额定电流 A | 效率% | 功率因数 cos φ | 最大转矩/ 额定转矩 | 堵转转矩/ 额定转矩 | 堵转电流/ 额定电流 |
|----------|----------|---------------|-----------|------|---------------|---------------|---------------|---------------|
| YKK400-2 | 220 | 2975 | 16.3 | 91.6 | 0.85 | 1.8 | 0.6 | 7.0 |
| YKK400-2 | 250 | 2975 | 18.5 | 91.8 | 0.85 | 1.8 | 0.6 | 7.0 |
| YKK400-2 | 280 | 2975 | 20.7 | 92.1 | 0.85 | 1.8 | 0.6 | 7.0 |
| YKK400-2 | 315 | 2975 | 23.2 | 92.4 | 0.85 | 1.8 | 0.6 | 7.0 |
| YKK400-2 | 355 | 2975 | 25.7 | 92.8 | 0.86 | 1.8 | 0.6 | 7.0 |
| YKK400-2 | 400 | 2975 | 28.8 | 93.1 | 0.86 | 1.8 | 0.6 | 7.0 |
| YKK400-4 | 220 | 1485 | 16.7 | 91.4 | 0.83 | 1.8 | 0.7 | 7.0 |
| YKK400-4 | 250 | 1485 | 19.0 | 91.6 | 0.83 | 1.8 | 0.7 | 7.0 |
| YKK400-4 | 280 | 1485 | 21.2 | 91.8 | 0.83 | 1.8 | 0.7 | 7.0 |
| YKK400-4 | 315 | 1485 | 23.8 | 92.1 | 0.83 | 1.8 | 0.7 | 7.0 |
| YKK400-4 | 355 | 1485 | 25.8 | 92.3 | 0.86 | 1.8 | 0.7 | 7.0 |
| YKK400-4 | 400 | 1485 | 29.0 | 92.5 | 0.86 | 1.8 | 0.7 | 7.0 |
| YKK400-6 | 220 | 990 | 17.4 | 91.2 | 0.80 | 1.8 | 0.7 | 6.0 |
| YKK400-6 | 250 | 990 | 19.7 | 91.4 | 0.80 | 1.8 | 0.7 | 6.0 |
| YKK400-6 | 280 | 990 | 22.0 | 91.7 | 0.80 | 1.8 | 0.7 | 6.0 |
| YKK450-2 | 450 | 2975 | 32.4 | 93.3 | 0.86 | 1.8 | 0.6 | 7.0 |
| YKK450-2 | 500 | 2975 | 35.9 | 93.4 | 0.86 | 1.8 | 0.6 | 7.0 |
| YKK450-2 | 560 | 2975 | 40.2 | 93.6 | 0.86 | 1.8 | 0.6 | 7.0 |
| YKK450-2 | 630 | 2975 | 44.6 | 93.7 | 0.87 | 1.8 | 0.6 | 7.0 |
| YKK450-2 | 710 | 2975 | 50.2 | 93.8 | 0.87 | 1.8 | 0.6 | 7.0 |
| YKK450-4 | 450 | 1485 | 32.5 | 92.9 | 0.86 | 1.8 | 0.7 | 7.0 |
| YKK450-4 | 500 | 1485 | 36.1 | 93.0 | 0.86 | 1.8 | 0.7 | 7.0 |
| YKK450-4 | 560 | 1485 | 40.3 | 93.3 | 0.86 | 1.8 | 0.7 | 7.0 |
| YKK450-4 | 630 | 1485 | 45.2 | 93.5 | 0.86 | 1.8 | 0.7 | 7.0 |
| YKK450-4 | 710 | 1485 | 50.7 | 94.1 | 0.86 | 1.8 | 0.7 | 7.0 |
| YKK450-6 | 315 | 990 | 24.1 | 92.0 | 0.82 | 1.8 | 0.7 | 6.0 |
| YKK450-6 | 355 | 990 | 26.8 | 92.2 | 0.83 | 1.8 | 0.7 | 6.0 |
| YKK450-6 | 400 | 990 | 30.1 | 92.4 | 0.83 | 1.8 | 0.7 | 6.0 |
| YKK450-6 | 450 | 990 | 33.8 | 92.6 | 0.83 | 1.8 | 0.7 | 6.0 |
| YKK450-6 | 500 | 990 | 37.4 | 93.0 | 0.83 | 1.8 | 0.7 | 6.0 |
| YKK450-8 | 220 | 740 | 18.6 | 91.1 | 0.75 | 1.8 | 0.7 | 6.0 |
| YKK450-8 | 250 | 740 | 21.1 | 91.3 | 0.75 | 1.8 | 0.7 | 6.0 |
| YKK450-8 | 280 | 740 | 23.2 | 91.6 | 0.76 | 1.8 | 0.7 | 6.0 |

YKK400-710系列高压10kV数据

| 型号 | 功率 kW | 额定转速 r/min | 额定电流 A | 效率% | 功率因数 $\cos \phi$ | 最大转矩/ 额定转矩 | 堵转转矩/ 额定转矩 | 堵转电流/ 额定电流 |
|-----------|----------|---------------|-----------|------|---------------------|---------------|---------------|---------------|
| YKK450-8 | 315 | 740 | 25.7 | 92.0 | 0.77 | 1.8 | 0.7 | 6.0 |
| YKK450-10 | 220 | 595 | 19.4 | 91.0 | 0.72 | 1.8 | 0.7 | 5.5 |
| YKK500-2 | 800 | 2975 | 56.5 | 94.0 | 0.87 | 1.8 | 0.6 | 7.0 |
| YKK500-2 | 900 | 2975 | 63.5 | 94.1 | 0.87 | 1.8 | 0.6 | 7.0 |
| YKK500-2 | 1000 | 2975 | 70.5 | 94.2 | 0.87 | 1.8 | 0.6 | 7.0 |
| YKK500-2 | 1120 | 2975 | 78.7 | 94.4 | 0.87 | 1.8 | 0.6 | 7.0 |
| YKK500-4 | 800 | 1485 | 56.3 | 94.3 | 0.87 | 1.8 | 0.7 | 7.0 |
| YKK500-4 | 900 | 1485 | 63.3 | 94.4 | 0.87 | 1.8 | 0.7 | 7.0 |
| YKK500-4 | 1000 | 1485 | 70.2 | 94.5 | 0.87 | 1.8 | 0.7 | 7.0 |
| YKK500-4 | 1120 | 1485 | 78.6 | 94.6 | 0.87 | 1.8 | 0.7 | 7.0 |
| YKK500-6 | 560 | 990 | 41.3 | 93.3 | 0.84 | 1.8 | 0.7 | 6.0 |
| YKK500-6 | 630 | 990 | 46.3 | 93.6 | 0.84 | 1.8 | 0.7 | 6.0 |
| YKK500-6 | 710 | 990 | 52.0 | 93.8 | 0.84 | 1.8 | 0.7 | 6.0 |
| YKK500-6 | 800 | 990 | 58.5 | 94.0 | 0.84 | 1.8 | 0.7 | 6.0 |
| YKK500-6 | 900 | 990 | 64.9 | 94.2 | 0.85 | 1.8 | 0.7 | 6.0 |
| YKK500-8 | 355 | 740 | 28.8 | 92.4 | 0.77 | 1.8 | 0.7 | 6.0 |
| YKK500-8 | 400 | 740 | 32.0 | 92.5 | 0.78 | 1.8 | 0.7 | 6.0 |
| YKK500-8 | 450 | 740 | 35.9 | 92.7 | 0.78 | 1.8 | 0.7 | 6.0 |
| YKK500-8 | 500 | 740 | 39.3 | 93.1 | 0.79 | 1.8 | 0.7 | 6.0 |
| YKK500-8 | 560 | 740 | 43.9 | 93.3 | 0.79 | 1.8 | 0.7 | 6.0 |
| YKK500-8 | 630 | 740 | 47.3 | 93.8 | 0.82 | 1.8 | 0.7 | 6.0 |
| YKK500-10 | 250 | 595 | 22.0 | 91.2 | 0.72 | 1.8 | 0.7 | 5.5 |
| YKK500-10 | 280 | 595 | 23.9 | 91.5 | 0.74 | 1.8 | 0.7 | 5.5 |
| YKK500-10 | 315 | 595 | 26.8 | 91.7 | 0.74 | 1.8 | 0.7 | 5.5 |
| YKK500-10 | 355 | 595 | 29.7 | 92.1 | 0.75 | 1.8 | 0.7 | 5.5 |
| YKK500-10 | 400 | 595 | 33.4 | 92.3 | 0.75 | 1.8 | 0.7 | 5.5 |
| YKK500-10 | 450 | 595 | 37.0 | 92.5 | 0.76 | 1.8 | 0.7 | 5.5 |
| YKK500-12 | 220 | 495 | 19.4 | 90.9 | 0.72 | 1.8 | 0.7 | 5.5 |
| YKK500-12 | 250 | 495 | 22.0 | 91.1 | 0.72 | 1.8 | 0.7 | 5.5 |
| YKK500-12 | 280 | 495 | 24.6 | 91.3 | 0.72 | 1.8 | 0.7 | 5.5 |
| YKK500-12 | 315 | 495 | 27.6 | 91.5 | 0.72 | 1.8 | 0.7 | 5.5 |
| YKK560-2 | 1250 | 2975 | 87.7 | 94.6 | 0.87 | 1.8 | 0.6 | 7.0 |
| YKK560-2 | 1400 | 2975 | 98.0 | 94.8 | 0.87 | 1.8 | 0.6 | 7.0 |

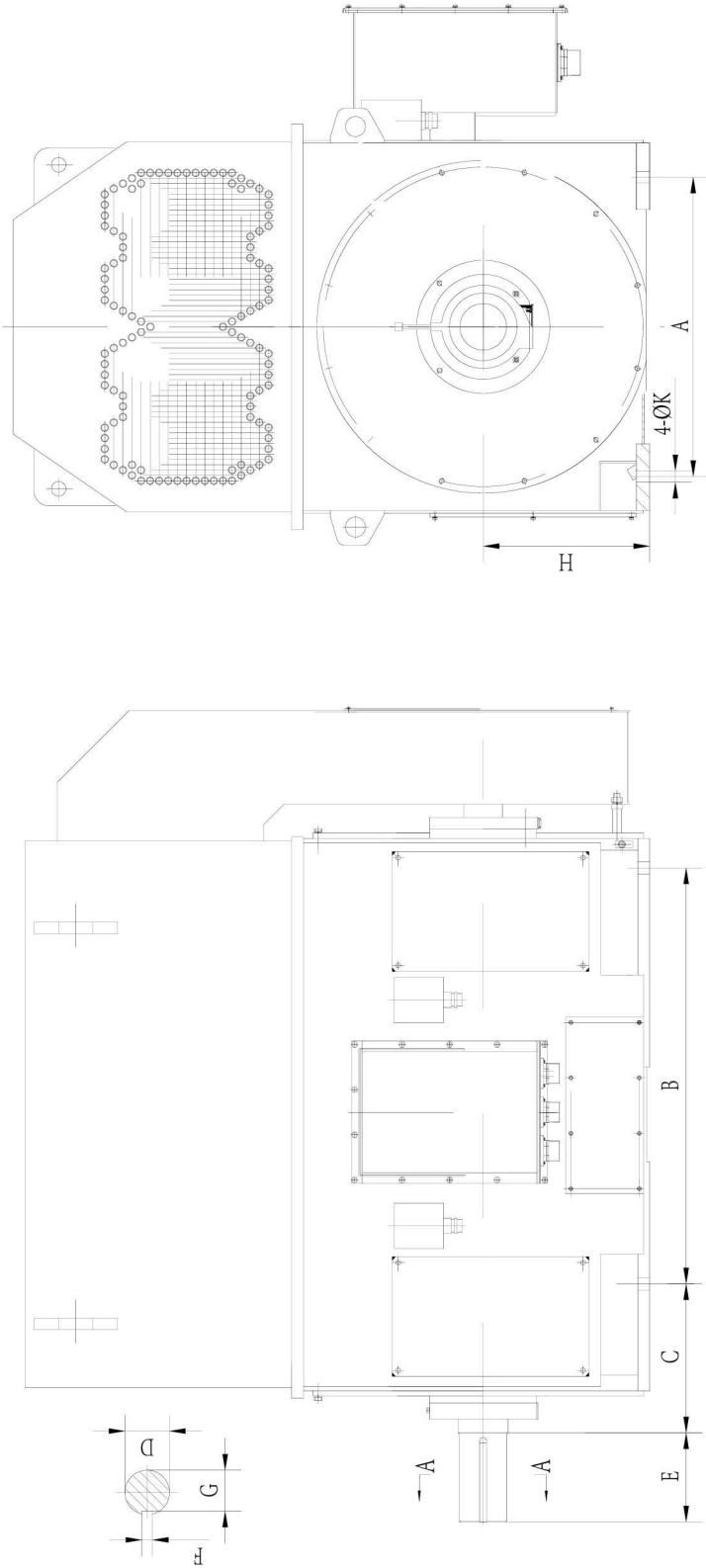
YKK400-710系列高压10kV数据

| 型号 | 功率 kW | 额定转速 r/min | 额定电流 A | 效率% | 功率因数 cos φ | 最大转矩/ 额定转矩 | 堵转转矩/ 额定转矩 | 堵转电流/ 额定电流 |
|-----------|----------|---------------|-----------|------|---------------|---------------|---------------|---------------|
| YKK560-2 | 1600 | 2975 | 110.6 | 94.9 | 0.88 | 1.8 | 0.6 | 7.0 |
| YKK560-2 | 1800 | 2975 | 124.3 | 95.0 | 0.88 | 1.8 | 0.6 | 7.0 |
| YKK560-4 | 1250 | 1485 | 86.6 | 94.7 | 0.88 | 1.8 | 0.7 | 7.0 |
| YKK560-4 | 1400 | 1485 | 96.7 | 95.0 | 0.88 | 1.8 | 0.7 | 7.0 |
| YKK560-4 | 1600 | 1485 | 110.4 | 95.1 | 0.88 | 1.8 | 0.7 | 7.0 |
| YKK560-4 | 1800 | 1485 | 124.1 | 95.2 | 0.88 | 1.8 | 0.7 | 7.0 |
| YKK560-6 | 1000 | 990 | 72.0 | 94.4 | 0.85 | 1.8 | 0.7 | 6.0 |
| YKK560-6 | 1120 | 990 | 80.4 | 94.6 | 0.85 | 1.8 | 0.7 | 6.0 |
| YKK560-6 | 1250 | 990 | 88.6 | 94.7 | 0.86 | 1.8 | 0.7 | 6.0 |
| YKK560-6 | 1400 | 990 | 98.8 | 95.1 | 0.86 | 1.8 | 0.7 | 6.0 |
| YKK560-8 | 710 | 740 | 53.2 | 94.0 | 0.82 | 1.8 | 0.7 | 6.0 |
| YKK560-8 | 800 | 740 | 59.8 | 94.2 | 0.82 | 1.8 | 0.7 | 6.0 |
| YKK560-8 | 900 | 740 | 67.2 | 94.3 | 0.82 | 1.8 | 0.7 | 6.0 |
| YKK560-8 | 1000 | 740 | 74.5 | 94.5 | 0.82 | 1.8 | 0.7 | 6.0 |
| YKK560-10 | 500 | 595 | 40.4 | 92.7 | 0.77 | 1.8 | 0.7 | 6.0 |
| YKK560-10 | 560 | 595 | 44.6 | 92.9 | 0.78 | 1.8 | 0.7 | 6.0 |
| YKK560-10 | 630 | 595 | 50.1 | 93.1 | 0.78 | 1.8 | 0.7 | 6.0 |
| YKK560-10 | 710 | 595 | 56.3 | 93.3 | 0.78 | 1.8 | 0.7 | 6.0 |
| YKK560-10 | 800 | 595 | 63.1 | 93.8 | 0.78 | 1.8 | 0.7 | 6.0 |
| YKK560-12 | 355 | 495 | 31.0 | 91.8 | 0.72 | 1.8 | 0.7 | 6.0 |
| YKK560-12 | 400 | 495 | 34.4 | 92.0 | 0.73 | 1.8 | 0.7 | 6.0 |
| YKK560-12 | 450 | 495 | 38.6 | 92.2 | 0.73 | 1.8 | 0.7 | 6.0 |
| YKK560-12 | 500 | 495 | 42.8 | 92.5 | 0.73 | 1.8 | 0.7 | 6.0 |
| YKK560-12 | 560 | 495 | 47.0 | 92.9 | 0.74 | 1.8 | 0.7 | 6.0 |
| YKK630-2 | 2000 | 2975 | 137.8 | 95.2 | 0.88 | 1.8 | 0.6 | 7.0 |
| YKK630-2 | 2240 | 2975 | 154.1 | 95.4 | 0.88 | 1.8 | 0.6 | 7.0 |
| YKK630-2 | 2500 | 2975 | 171.9 | 95.4 | 0.88 | 1.8 | 0.6 | 7.0 |
| YKK630-4 | 2000 | 1485 | 137.5 | 95.4 | 0.88 | 1.8 | 0.6 | 7.0 |
| YKK630-4 | 2240 | 1485 | 153.9 | 95.5 | 0.88 | 1.8 | 0.6 | 7.0 |
| YKK630-4 | 2500 | 1485 | 171.8 | 95.5 | 0.88 | 1.8 | 0.6 | 7.0 |
| YKK630-6 | 1600 | 990 | 112.8 | 95.2 | 0.86 | 1.8 | 0.6 | 6.0 |
| YKK630-6 | 1800 | 990 | 126.8 | 95.3 | 0.86 | 1.8 | 0.6 | 6.0 |
| YKK630-6 | 2000 | 990 | 140.7 | 95.4 | 0.86 | 1.8 | 0.6 | 6.0 |

YKK400-710系列高压10kV数据

| 型号 | 功率 kW | 额定转速 r/min | 额定电流 A | 效率% | 功率因数 cos φ | 最大转矩/ 额定转矩 | 堵转转矩/ 额定转矩 | 堵转电流/ 额定电流 |
|-----------|----------|---------------|-----------|------|---------------|---------------|---------------|---------------|
| YKK630-6 | 2240 | 990 | 157.6 | 95.4 | 0.86 | 1.8 | 0.6 | 6.0 |
| YKK630-8 | 1120 | 740 | 82.3 | 94.7 | 0.83 | 1.8 | 0.7 | 6.0 |
| YKK630-8 | 1250 | 740 | 91.7 | 94.8 | 0.83 | 1.8 | 0.7 | 6.0 |
| YKK630-8 | 1400 | 740 | 102.6 | 94.9 | 0.83 | 1.8 | 0.7 | 6.0 |
| YKK630-8 | 1600 | 740 | 117.3 | 94.9 | 0.83 | 1.8 | 0.7 | 6.0 |
| YKK630-10 | 900 | 595 | 69.1 | 94.0 | 0.80 | 1.8 | 0.7 | 6.0 |
| YKK630-10 | 1000 | 595 | 76.7 | 94.1 | 0.80 | 1.8 | 0.7 | 6.0 |
| YKK630-10 | 1120 | 595 | 85.8 | 94.2 | 0.80 | 1.8 | 0.7 | 6.0 |
| YKK630-10 | 1250 | 595 | 95.8 | 94.2 | 0.80 | 1.8 | 0.7 | 6.0 |
| YKK630-10 | 1400 | 595 | 107.1 | 94.3 | 0.80 | 1.8 | 0.7 | 6.0 |
| YKK630-12 | 630 | 495 | 52.8 | 93.1 | 0.74 | 1.8 | 0.7 | 6.0 |
| YKK630-12 | 710 | 495 | 59.4 | 93.3 | 0.74 | 1.8 | 0.7 | 6.0 |
| YKK630-12 | 800 | 495 | 66.5 | 93.8 | 0.74 | 1.8 | 0.7 | 6.0 |
| YKK630-12 | 900 | 495 | 74.9 | 93.8 | 0.74 | 1.8 | 0.7 | 6.0 |
| YKK630-12 | 1000 | 495 | 83.2 | 93.8 | 0.74 | 1.8 | 0.7 | 6.0 |
| YKK710-2 | 2800 | 2985 | 192.6 | 95.4 | 0.88 | 1.8 | 0.5 | 6.5 |
| YKK710-2 | 3150 | 2985 | 216.4 | 95.5 | 0.88 | 1.8 | 0.5 | 6.5 |
| YKK710-2 | 3550 | 2985 | 243.9 | 95.5 | 0.88 | 1.8 | 0.5 | 6.5 |
| YKK710-4 | 2800 | 1485 | 192.4 | 95.5 | 0.88 | 1.8 | 0.5 | 6.5 |
| YKK710-4 | 3150 | 1485 | 216.4 | 95.5 | 0.88 | 1.8 | 0.5 | 6.5 |
| YKK710-4 | 3550 | 1485 | 243.6 | 95.6 | 0.88 | 1.8 | 0.5 | 6.5 |
| YKK710-6 | 2500 | 990 | 175.9 | 95.4 | 0.86 | 1.8 | 0.6 | 6.5 |
| YKK710-6 | 2800 | 990 | 197.0 | 95.4 | 0.86 | 1.8 | 0.6 | 6.5 |
| YKK710-8 | 1800 | 745 | 131.9 | 94.9 | 0.83 | 1.8 | 0.6 | 6.5 |
| YKK710-8 | 2000 | 745 | 146.4 | 95.0 | 0.83 | 1.8 | 0.6 | 6.5 |
| YKK710-8 | 2240 | 745 | 164.0 | 95.0 | 0.83 | 1.8 | 0.6 | 6.5 |
| YKK710-10 | 1600 | 595 | 122.3 | 94.4 | 0.80 | 1.8 | 0.6 | 6.0 |
| YKK710-12 | 1120 | 495 | 86.2 | 93.8 | 0.80 | 1.8 | 0.6 | 6.0 |
| YKK710-12 | 1250 | 495 | 96.1 | 93.9 | 0.80 | 1.8 | 0.6 | 6.0 |
| YKK710-16 | 630 | 365 | 53.6 | 93.0 | 0.73 | 1.8 | 0.6 | 6.0 |
| YKK710-16 | 710 | 365 | 60.3 | 93.1 | 0.73 | 1.8 | 0.6 | 6.0 |
| YKK710-16 | 800 | 365 | 67.9 | 93.2 | 0.73 | 1.8 | 0.6 | 6.0 |
| YKK710-16 | 900 | 365 | 76.3 | 93.3 | 0.73 | 1.8 | 0.6 | 6.0 |

YKK系列高压三相异步电动机安装尺寸 (800-1000)



YKK800-1000系列6/10kV高压三相异步电动机安装尺寸

安装尺寸及公差

| 机座号 | A | | B | | C | | D | | E | | F | | G | | H | | K |
|------|------|------|------|------|------|------|------|------------------|------|-------|------|-------------|------|-----------|------|-----------|------|
| | 基本尺寸 | 极限偏差 | 基本尺寸 | 极限偏差 | 基本尺寸 | 极限偏差 | 基本尺寸 | 极限偏差 | 基本尺寸 | 极限偏差 | 基本尺寸 | 极限偏差 | 基本尺寸 | 极限偏差 | 基本尺寸 | 极限偏差 | 基本尺寸 |
| 800 | 1600 | ±2.8 | 2000 | ±2.8 | 530 | | 220 | +0.046 +0.017 | 350 | ±0.70 | 50 | 0 -0.062 | 203 | | 800 | | 56 |
| 900 | 1800 | ±3.5 | 2240 | ±3.5 | 600 | ±4.2 | 250 | +0.052 +0.020 | 410 | ±0.77 | 56 | 0 -0.074 | 230 | 0 -0.3 | 900 | 0 -1.5 | 66 |
| | | | | | | | | | | | | | | | | | |
| 1000 | 2000 | | 2500 | | | | 280 | | 470 | | 63 | | 260 | | 1000 | | |

YKK800-1000系列高压6kV数据

| 型号 | 功率 kW | 额定转速 r/min | 额定电流 A | 效率% | 功率因数 $\cos \phi$ | 最大转矩/ 额定转矩 | 堵转转矩/ 额定转矩 | 堵转电流/ 额定电流 |
|-----------|----------|---------------|-----------|------|---------------------|---------------|---------------|---------------|
| YKK800-2 | 5000 | 2975 | 570.1 | 95.9 | 0.88 | 1.8 | 0.5 | 6.5 |
| YKK800-2 | 5600 | 2975 | 637.9 | 96.0 | 0.88 | 1.8 | 0.5 | 6.5 |
| YKK800-2 | 6300 | 2975 | 716.9 | 96.1 | 0.88 | 1.8 | 0.5 | 6.5 |
| YKK800-4 | 5000 | 1485 | 569.5 | 96.0 | 0.88 | 1.8 | 0.5 | 6.5 |
| YKK800-4 | 5600 | 1485 | 637.2 | 96.1 | 0.88 | 1.8 | 0.5 | 6.5 |
| YKK800-4 | 6300 | 1485 | 716.1 | 96.2 | 0.88 | 1.8 | 0.5 | 6.5 |
| YKK800-6 | 3550 | 990 | 410.3 | 95.7 | 0.87 | 1.8 | 0.6 | 6.5 |
| YKK800-6 | 4000 | 990 | 462.3 | 95.7 | 0.87 | 1.8 | 0.6 | 6.5 |
| YKK800-6 | 4500 | 990 | 519.6 | 95.8 | 0.87 | 1.8 | 0.6 | 6.5 |
| YKK800-8 | 2500 | 740 | 297.3 | 95.2 | 0.85 | 1.8 | 0.6 | 6.5 |
| YKK800-8 | 2800 | 740 | 332.6 | 95.3 | 0.85 | 1.8 | 0.6 | 6.5 |
| YKK800-8 | 3150 | 740 | 374.2 | 95.3 | 0.85 | 1.8 | 0.6 | 6.5 |
| YKK800-10 | 2240 | 595 | 280.7 | 94.8 | 0.81 | 1.8 | 0.6 | 6.0 |
| YKK800-10 | 2500 | 595 | 313.0 | 94.9 | 0.81 | 1.8 | 0.6 | 6.0 |
| YKK800-10 | 2800 | 595 | 350.1 | 95.0 | 0.81 | 1.8 | 0.6 | 6.0 |
| YKK800-12 | 1800 | 495 | 238.3 | 94.4 | 0.77 | 1.8 | 0.6 | 6.0 |
| YKK800-12 | 2000 | 495 | 264.5 | 94.5 | 0.77 | 1.8 | 0.6 | 6.0 |
| YKK800-12 | 2240 | 495 | 295.9 | 94.6 | 0.77 | 1.8 | 0.6 | 6.0 |
| YKK800-16 | 1120 | 370 | 153.4 | 93.7 | 0.75 | 1.8 | 0.6 | 6.0 |
| YKK800-16 | 1250 | 370 | 171.0 | 93.8 | 0.75 | 1.8 | 0.6 | 6.0 |
| YKK800-16 | 1400 | 370 | 191.3 | 93.9 | 0.75 | 1.8 | 0.6 | 6.0 |
| YKK900-4 | 7100 | 1485 | 798.0 | 96.2 | 0.89 | 1.8 | 0.5 | 6.5 |
| YKK900-4 | 8000 | 1485 | 898.2 | 96.3 | 0.89 | 1.8 | 0.5 | 6.5 |
| YKK900-6 | 5000 | 990 | 570.1 | 95.9 | 0.88 | 1.8 | 0.6 | 6.5 |

YKK800-1000系列高压6kV数据

| 型号 | 功率 kW | 额定转速 r/min | 额定电流 A | 效率% | 功率因数 cos φ | 最大转矩/ 额定转矩 | 堵转转矩/ 额定转矩 | 堵转电流/ 额定电流 |
|------------|----------|---------------|-----------|------|---------------|---------------|---------------|---------------|
| YKK900-6 | 5600 | 990 | 637.9 | 96.0 | 0.88 | 1.8 | 0.6 | 6.5 |
| YKK900-6 | 6300 | 990 | 716.9 | 96.1 | 0.88 | 1.8 | 0.6 | 6.5 |
| YKK900-8 | 3550 | 740 | 416.4 | 95.4 | 0.86 | 1.8 | 0.6 | 6.5 |
| YKK900-8 | 4000 | 740 | 468.7 | 95.5 | 0.86 | 1.8 | 0.6 | 6.5 |
| YKK900-8 | 4500 | 740 | 526.7 | 95.6 | 0.86 | 1.8 | 0.6 | 6.5 |
| YKK900-10 | 3150 | 595 | 388.7 | 95.1 | 0.82 | 1.8 | 0.6 | 6.0 |
| YKK900-10 | 3550 | 595 | 437.6 | 95.2 | 0.82 | 1.8 | 0.6 | 6.0 |
| YKK900-10 | 4000 | 595 | 492.6 | 95.3 | 0.82 | 1.8 | 0.6 | 6.0 |
| YKK900-12 | 2500 | 495 | 325.7 | 94.7 | 0.78 | 1.8 | 0.6 | 6.0 |
| YKK900-12 | 2800 | 495 | 364.4 | 94.8 | 0.78 | 1.8 | 0.6 | 6.0 |
| YKK900-12 | 3150 | 495 | 409.5 | 94.9 | 0.78 | 1.8 | 0.6 | 6.0 |
| YKK900-16 | 1600 | 370 | 215.5 | 94.0 | 0.76 | 1.8 | 0.6 | 6.0 |
| YKK900-16 | 1800 | 370 | 242.2 | 94.1 | 0.76 | 1.8 | 0.6 | 6.0 |
| YKK900-16 | 2000 | 370 | 268.8 | 94.2 | 0.76 | 1.8 | 0.6 | 6.0 |
| YKK1000-6 | 7100 | 990 | 807.1 | 96.2 | 0.88 | 1.8 | 0.6 | 6.5 |
| YKK1000-6 | 8000 | 990 | 908.4 | 96.3 | 0.88 | 1.8 | 0.6 | 6.5 |
| YKK1000-8 | 5000 | 740 | 577.9 | 95.7 | 0.87 | 1.8 | 0.6 | 6.5 |
| YKK1000-8 | 5600 | 740 | 646.6 | 95.8 | 0.87 | 1.8 | 0.6 | 6.5 |
| YKK1000-8 | 6300 | 740 | 726.6 | 95.9 | 0.87 | 1.8 | 0.6 | 6.5 |
| YKK1000-10 | 4500 | 595 | 553.5 | 95.4 | 0.82 | 1.8 | 0.6 | 6.0 |
| YKK1000-10 | 5000 | 595 | 614.4 | 95.5 | 0.82 | 1.8 | 0.6 | 6.0 |
| YKK1000-12 | 3550 | 495 | 461.0 | 95.0 | 0.78 | 1.8 | 0.6 | 6.0 |
| YKK1000-12 | 4000 | 495 | 518.9 | 95.1 | 0.78 | 1.8 | 0.6 | 6.0 |
| YKK1000-16 | 2240 | 370 | 300.8 | 94.3 | 0.76 | 1.8 | 0.6 | 6.0 |
| YKK1000-16 | 2500 | 370 | 335.3 | 94.4 | 0.76 | 1.8 | 0.6 | 6.0 |

YKK800-1000系列高压10kV数据

| 型号 | 功率 kW | 额定转速 r/min | 额定电流 A | 效率% | 功率因数 $\cos \phi$ | 最大转矩/ 额定转矩 | 堵转转矩/ 额定转矩 | 堵转电流/ 额定电流 |
|-----------|----------|---------------|-----------|------|---------------------|---------------|---------------|---------------|
| YKK800-2 | 4000 | 2975 | 271.4 | 95.6 | 0.89 | 1.8 | 0.5 | 6.5 |
| YKK800-2 | 4500 | 2975 | 305.0 | 95.7 | 0.89 | 1.8 | 0.5 | 6.5 |
| YKK800-2 | 5000 | 2975 | 338.9 | 95.7 | 0.89 | 1.8 | 0.5 | 6.5 |
| YKK800-4 | 4000 | 1485 | 274.5 | 95.6 | 0.88 | 1.8 | 0.5 | 6.5 |
| YKK800-4 | 4500 | 1485 | 308.5 | 95.7 | 0.88 | 1.8 | 0.5 | 6.5 |
| YKK800-4 | 5000 | 1485 | 342.8 | 95.7 | 0.88 | 1.8 | 0.5 | 6.5 |
| YKK800-6 | 3150 | 990 | 221.4 | 95.5 | 0.86 | 1.8 | 0.6 | 6.5 |
| YKK800-6 | 3550 | 990 | 249.3 | 95.6 | 0.86 | 1.8 | 0.6 | 6.5 |
| YKK800-8 | 2500 | 740 | 182.9 | 95.1 | 0.83 | 1.8 | 0.6 | 6.5 |
| YKK800-8 | 2800 | 740 | 204.8 | 95.1 | 0.83 | 1.8 | 0.6 | 6.5 |
| YKK800-10 | 1800 | 595 | 137.5 | 94.5 | 0.80 | 1.8 | 0.6 | 6.0 |
| YKK800-10 | 2000 | 595 | 152.6 | 94.6 | 0.80 | 1.8 | 0.6 | 6.0 |
| YKK800-10 | 2240 | 595 | 170.9 | 94.6 | 0.80 | 1.8 | 0.6 | 6.0 |
| YKK800-12 | 1400 | 495 | 106.3 | 93.9 | 0.81 | 1.8 | 0.6 | 6.0 |
| YKK800-12 | 1600 | 495 | 121.3 | 94.0 | 0.81 | 1.8 | 0.6 | 6.0 |
| YKK800-12 | 1800 | 495 | 136.5 | 94.0 | 0.81 | 1.8 | 0.6 | 6.0 |
| YKK800-16 | 1000 | 370 | 84.8 | 93.3 | 0.73 | 1.8 | 0.6 | 6.0 |
| YKK800-16 | 1120 | 370 | 94.9 | 93.3 | 0.73 | 1.8 | 0.6 | 6.0 |
| YKK800-16 | 1250 | 370 | 106.0 | 93.3 | 0.73 | 1.8 | 0.6 | 6.0 |
| YKK900-6 | 4000 | 990 | 280.6 | 95.7 | 0.86 | 1.8 | 0.6 | 6.5 |
| YKK900-6 | 4500 | 990 | 315.4 | 95.8 | 0.86 | 1.8 | 0.6 | 6.5 |
| YKK900-6 | 5000 | 990 | 350.4 | 95.8 | 0.86 | 1.8 | 0.6 | 6.5 |
| YKK900-8 | 3150 | 740 | 230.2 | 95.2 | 0.83 | 1.8 | 0.6 | 6.5 |
| YKK900-8 | 3550 | 740 | 259.4 | 95.2 | 0.83 | 1.8 | 0.6 | 6.5 |

YKK800-1000系列高压10kV数据

| 型号 | 功率 kW | 额定转速 r/min | 额定电流 A | 效率% | 功率因数 cos φ | 最大转矩/ 额定转矩 | 堵转转矩/ 额定转矩 | 堵转电流/ 额定电流 |
|------------|----------|---------------|-----------|------|---------------|---------------|---------------|---------------|
| YKK900-8 | 4000 | 740 | 292.0 | 95.3 | 0.83 | 1.8 | 0.6 | 6.5 |
| YKK900-10 | 2500 | 595 | 188.2 | 94.7 | 0.81 | 1.8 | 0.6 | 6.0 |
| YKK900-10 | 2800 | 595 | 210.5 | 94.8 | 0.81 | 1.8 | 0.6 | 6.0 |
| YKK900-10 | 3150 | 595 | 236.8 | 94.8 | 0.81 | 1.8 | 0.6 | 6.0 |
| YKK900-12 | 2000 | 495 | 151.5 | 94.1 | 0.81 | 1.8 | 0.6 | 6.0 |
| YKK900-12 | 2240 | 495 | 169.5 | 94.2 | 0.81 | 1.8 | 0.6 | 6.0 |
| YKK900-12 | 2500 | 495 | 189.0 | 94.3 | 0.81 | 1.8 | 0.6 | 6.0 |
| YKK900-16 | 1400 | 370 | 118.6 | 93.4 | 0.73 | 1.8 | 0.6 | 6.0 |
| YKK900-16 | 1600 | 370 | 135.3 | 93.5 | 0.73 | 1.8 | 0.6 | 6.0 |
| YKK900-16 | 1800 | 370 | 152.1 | 93.6 | 0.73 | 1.8 | 0.6 | 6.0 |
| YKK1000-6 | 5600 | 990 | 387.5 | 95.9 | 0.87 | 1.8 | 0.6 | 6.5 |
| YKK1000-6 | 6300 | 990 | 436.0 | 95.9 | 0.87 | 1.8 | 0.6 | 6.5 |
| YKK1000-6 | 7100 | 990 | 491.3 | 95.9 | 0.87 | 1.8 | 0.6 | 6.5 |
| YKK1000-8 | 4500 | 740 | 328.1 | 95.4 | 0.83 | 1.8 | 0.6 | 6.5 |
| YKK1000-8 | 5000 | 740 | 364.2 | 95.5 | 0.83 | 1.8 | 0.6 | 6.5 |
| YKK1000-8 | 5600 | 740 | 407.5 | 95.6 | 0.83 | 1.8 | 0.6 | 6.5 |
| YKK1000-10 | 3550 | 595 | 263.4 | 94.9 | 0.82 | 1.8 | 0.6 | 6.0 |
| YKK1000-10 | 4000 | 595 | 296.8 | 94.9 | 0.82 | 1.8 | 0.6 | 6.0 |
| YKK1000-10 | 4500 | 595 | 333.9 | 94.9 | 0.82 | 1.8 | 0.6 | 6.0 |
| YKK1000-12 | 2800 | 495 | 211.4 | 94.4 | 0.81 | 1.8 | 0.6 | 6.0 |
| YKK1000-12 | 3150 | 495 | 237.9 | 94.4 | 0.81 | 1.8 | 0.6 | 6.0 |
| YKK1000-12 | 3550 | 495 | 268.1 | 94.4 | 0.81 | 1.8 | 0.6 | 6.0 |
| YKK1000-16 | 2000 | 370 | 168.8 | 93.7 | 0.73 | 1.8 | 0.6 | 6.0 |
| YKK1000-16 | 2240 | 370 | 189.1 | 93.7 | 0.73 | 1.8 | 0.6 | 6.0 |